

# ViewBoard® 65" 4K Interactive Display

**IFP6550-2**

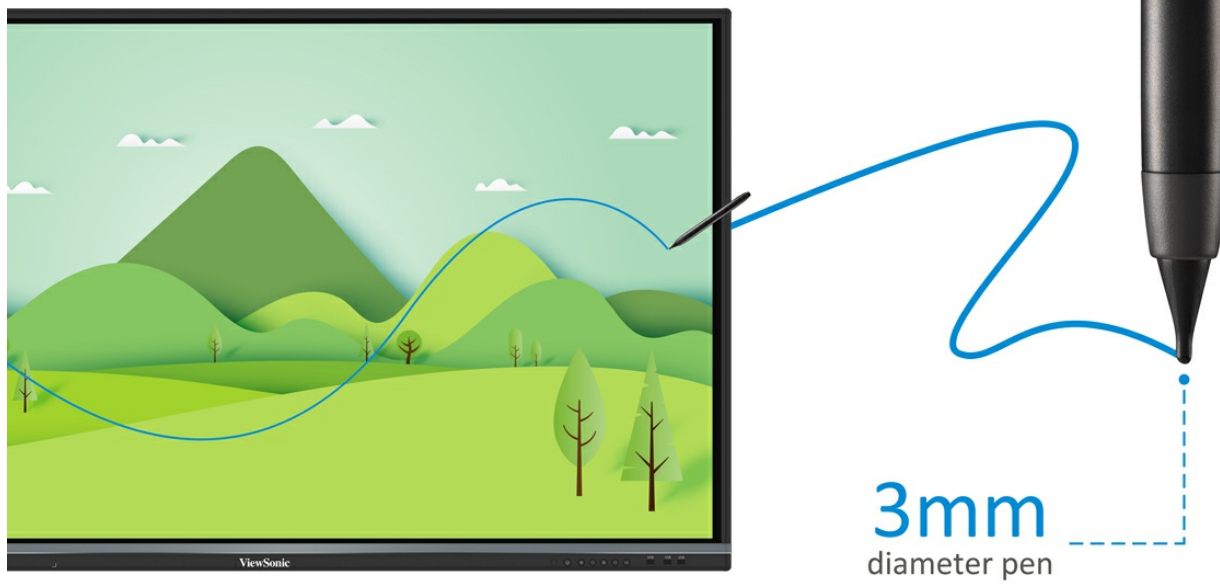


- Ultra fine touch technology enables real-time response dual-pen writing with a 3mm diameter pen tip
- 2.1 Stereo sound with a built-in woofer
- Built-in myViewBoard™ whiteboarding software to collaborate on the go
- 4-way split screen content sharing with built-in ViewBoard® Cast software
- SmartPort™ shared front USB ports for internal & external PCs

The ViewBoard® IFP50 series embraces ultra fine touch technology to offer fine precision writing. Along with slim IR touch and its optimized integration, the processing time is faster than traditional IR panels. Meanwhile, smooth dual-pen writing with our new, slim 3mm pens enables teachers and students to work efficiently on any detailed tasks that require the accurate use of fine tipped pens during group discussion. On top of that, the ViewBoard® IFP50 series is designed with a slim bezel to broaden your viewing experience, so that even at the edge you can write clearly and thinly. It is also well integrated with myViewBoard™ whiteboarding software to collaborate on the go, and further complimented by ViewBoard® Cast software for 4 way split screen content sharing.

## Ultra Fine Touch Technology

It provides fine precision writing with a 3mm diameter pen tip



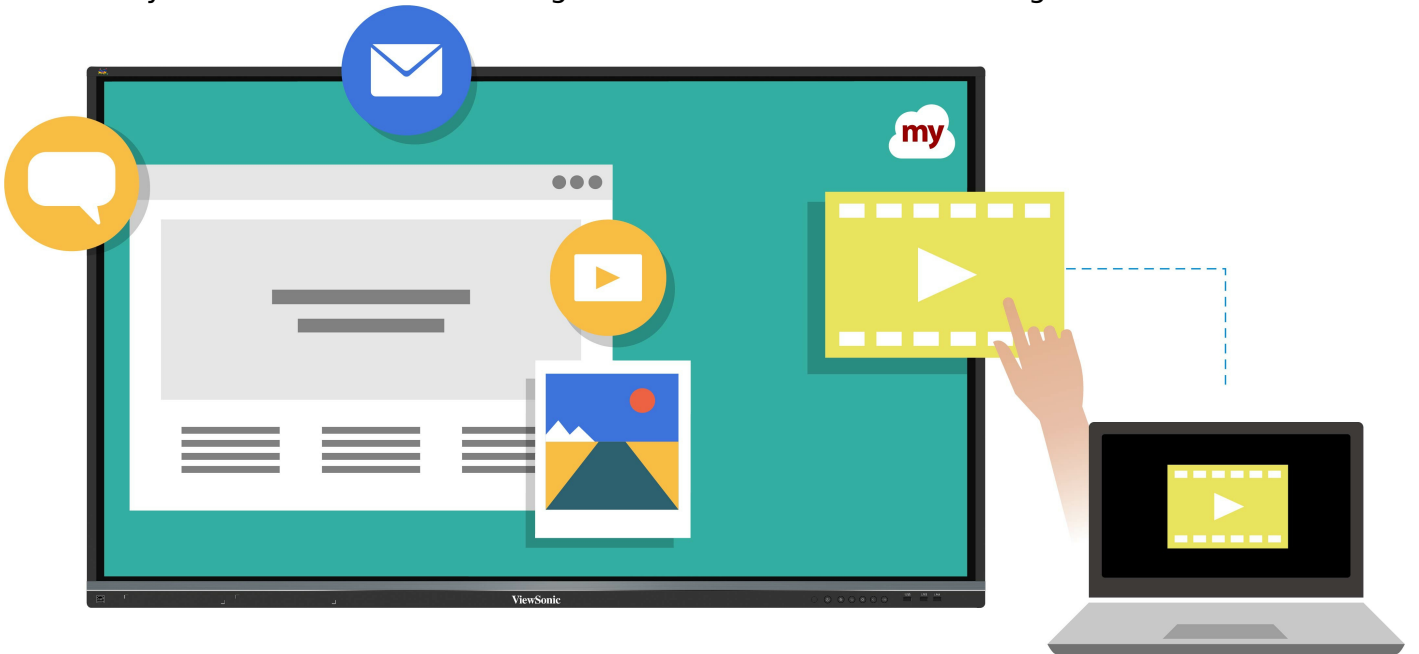
## Dual-Pen

Automatically detect pen diameter (8mm & 3mm) and write simultaneously with different colours and thicknesses.



## Full Native Performance on Android

Built-in myViewBoard® whiteboarding software to collaborate on the go



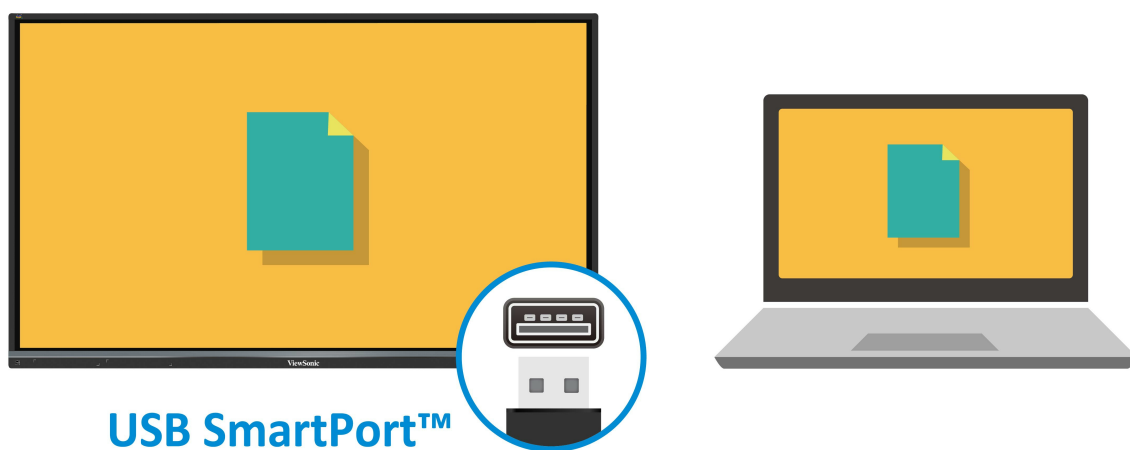
## 4-way Split Screen

4-way split screen content sharing with built-in ViewBoard® Cast software.



## Shared USB Ports

SmartPort™ shared front USB ports for internal & external PCs.



## Stereo Sound

2.1 Stereo sound with a built-in subwoofer.



## Faster Internet

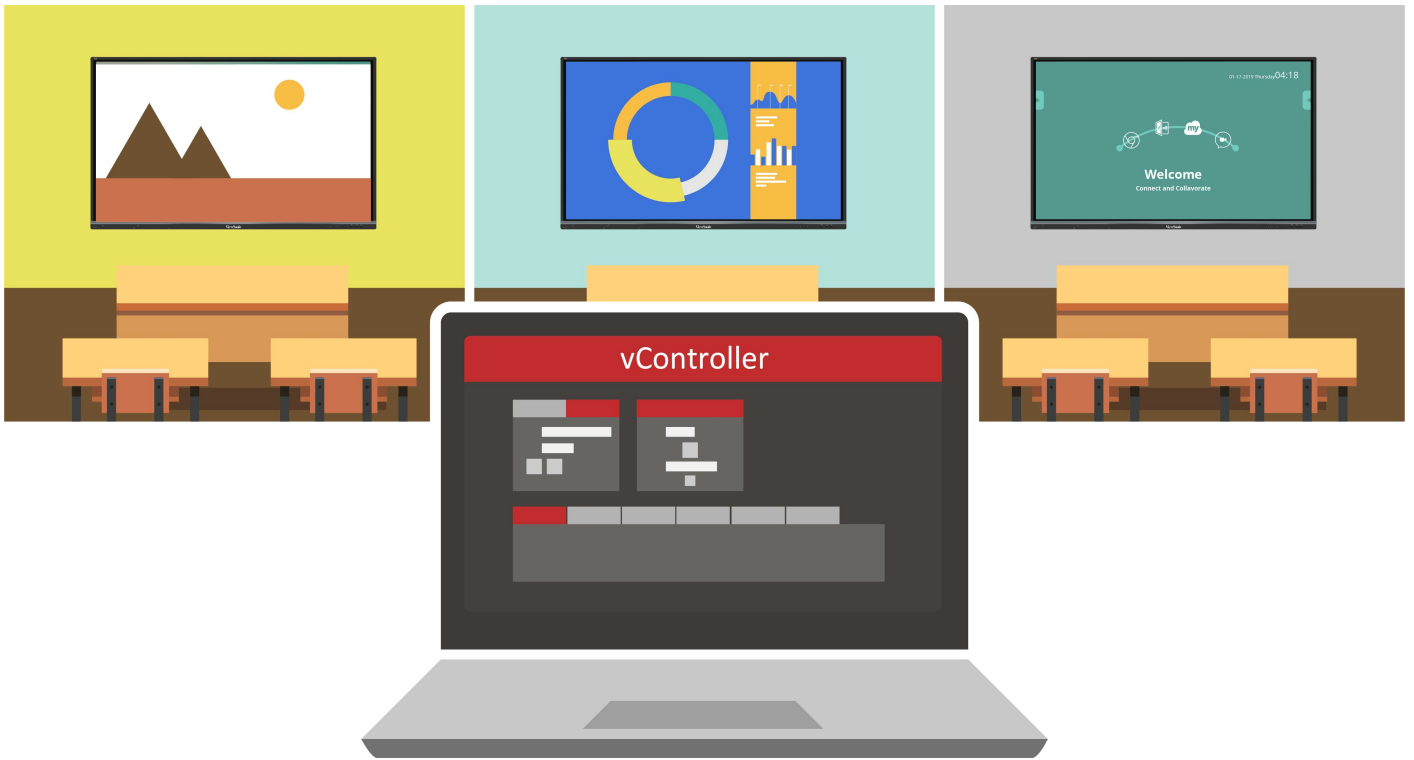
LAN sharing with slot-in PC provides a faster, more powerful internet connection.

LAN Share



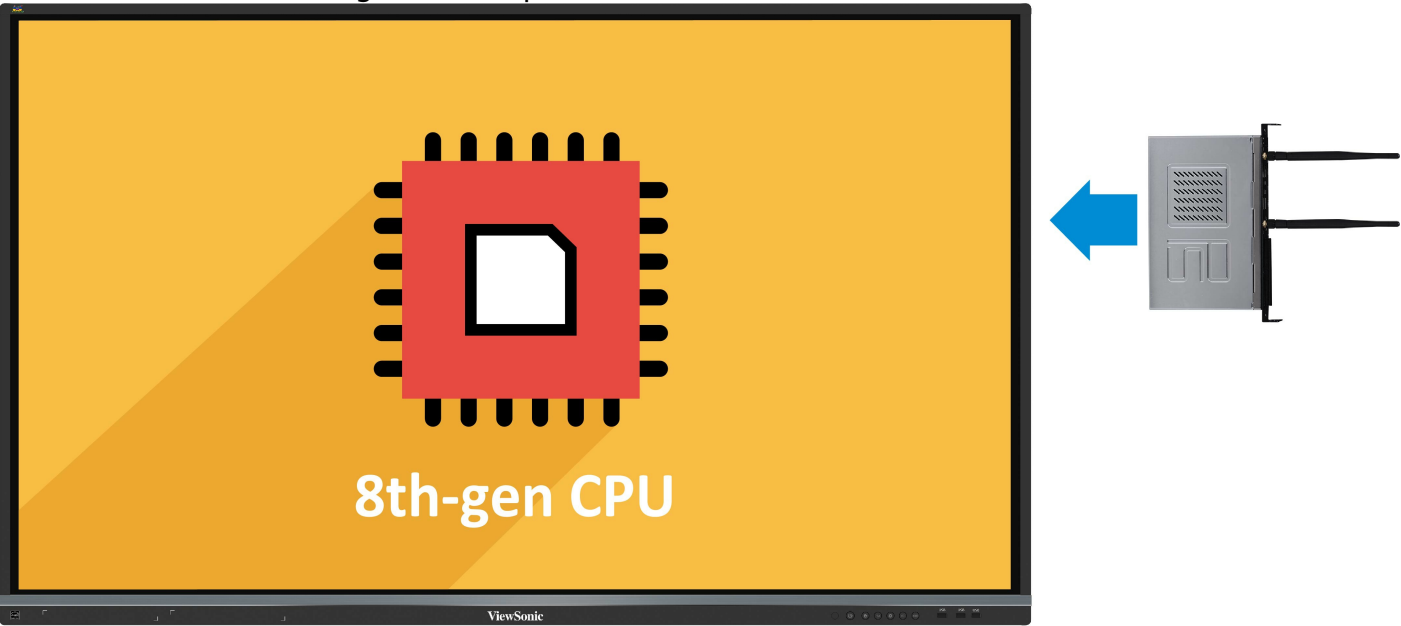
## Remote Control

Built-in RS232 port and vController software for remote control.



**Slot-in PC**

Slot-in PC with Intel 8th-gen CPU (Optional).

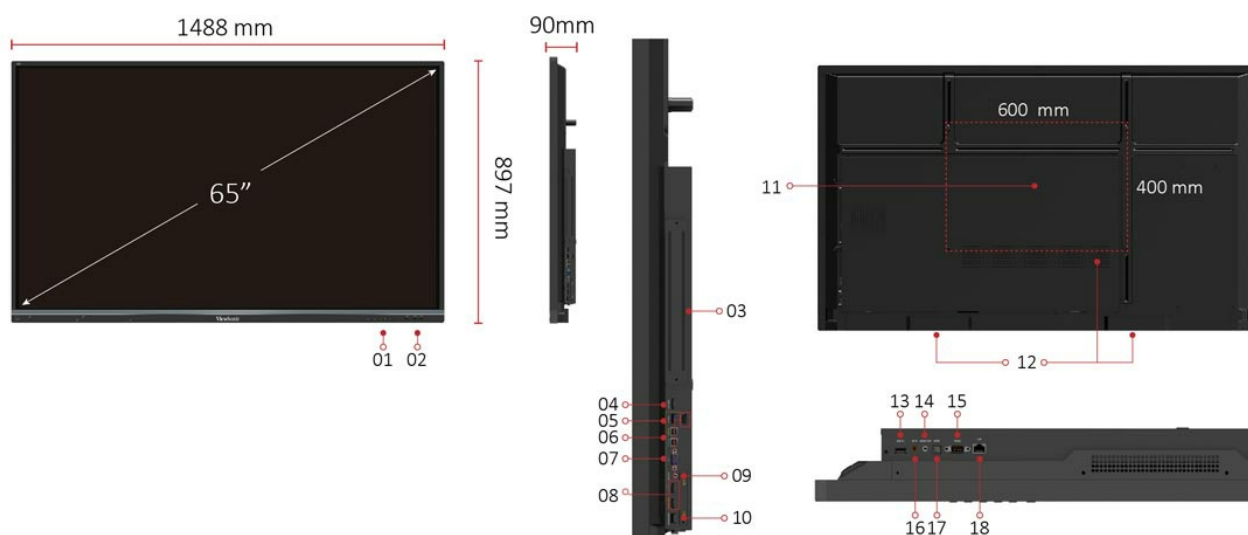


**Web Camera**

Top-mounted 1080p web camera (Optional).



## I/O Ports



1. MENU CONTROLS
2. USB X 3
3. Intel Unite® Certified OPS Slot
4. HDMI OUT
5. USB 3.0
6. TOUCH X 2
7. VGA
8. HDMI IN X 2
9. AUDIO IN

- 10. CAMERA PORT
- 11. VESA® WALL Mount 600x400 mm
- 12. INTERNAL SPEAKERS
- 13. USB 2.0
- 14. AUDIO OUT
- 15. RS232
- 16. AV IN
- 17. SPDIF
- 18. LAN

## Technical Specifications

Display	Panel Size	65"
	Type/Tech	TFT LCD Module with DLED Backlight.
	Display Area (mm)	1431 (H) x 807 (V) (64.5" diagonal)
	Aspect Ratio	16:9
	Native Resolution	UHD 3840x2160(Pixels)
	Colours	1.07B colours (10bit)
	Brightness	350 nits (typ.) 300 nits (min.)
	Contrast Ratio	5000:1 (DCR)
	Response Time	8ms
	Viewing Angles	H = 178, V = 178 typ.
	Backlight Life	30,000 Hours (Min)
	Surface Treatment	Anti-Glare
	Bezel	Slim
Platform	Orientation	Landscape
	Processor	ARM Cortex A73 dual-core 1.2GHz
	RAM	2GB DDR4
Touch	Storage	16GB
	Type/ Tech	IR Recognition
	Touch Resolution	32767 x 32767
INPUT	Touch Point	20 points touch, 10 points writing
	HDMI	2.0 x3 (3840x2160 @60Hz)
	RGB / VGA	x1
	Audio	x1 (PC audio in)
	CVBS	x1
	RS232	x1
	OPS	x1 PC Slot (proprietary)
OUTPUT	HDMI	x1
	Audio	x1 (Earphone out)
	SPDIF	1(optical)
	RS232	x1
LAN	RJ45	x1
USB	Type A	USB 2.0 x4(including 2 USB port in front) USB 3.0 x2(including 1 USB port in front)
	Type B	x2, for touch
SPEAKERS	SPEAKERS	10W x 2 + 15W x 1
Top Camera Plate		Yes



<b>COMPATIBILITY</b>	<b>RGB PC/HDMI PC</b>	Refer to timing table
	<b>CVBS</b>	480i
	<b>HDMI</b>	3840x2160
<b>Embedded OS</b>	<b>Embedded OS</b>	Android 7
<b>USB SUPPORTED FILE FORMAT</b>	<b>USB SUPPORTED FILE FORMAT</b>	Picture - BMP, JPEG, PNG
		Video - Codec: MPEG1, MPEG2, MPEG2-PS, MPEG4, MKV Container: MPG, MP4, MOV, VOB, DAT, MKV
		Audio - Codec: AAC, HEAAC, MPEG1, MPEG2 Container: AAC, M4A, MP3
<b>Bundle Software</b>	<b>Basic Annotation Software</b>	myViewBoard
	<b>Pro Annotation Software</b>	myViewBoard for windows (Embedded in Windows Slot-in PC)
	<b>Wireless Presentation with Touch Feedback: Viewboard Cast</b>	yes
	<b>ViewSonic Launcher</b>	Embedded
<b>Special Features</b>	<b>All-in-one USB port (combine Windows/Android USB port; no need to distinguish them anymore)</b>	Front "SmartPort™ USB" to all channels.
	<b>Simple LAN sharing between IFP and slot-in device</b>	10M/100M for Android 10M/100M/1000M for slot-in PC
<b>Power</b>	<b>Voltage</b>	100-240VAC +/- 10% Wide Range
	<b>Consumption</b>	104W (Typ.) < 0.5 W ("Off")
<b>ERGONOMICS</b>	<b>Wall Mount (VESA® )</b>	600 x 400
<b>OPERATING CONDITIONS</b>	<b>Temperature (° C)</b>	0°C to 40°C
	<b>Humidity</b>	10% ~ 90% RH non-condensing
<b>DIMENSIONS (W x H x D)</b>	<b>Physical (inch / mm)</b>	58.6 x 35.3 x 3.5 in / 1488 x 897 x 90 mm
	<b>Packaging (inch / mm)</b>	65.7 x 39.8 x 8.8 in / 1669 x 1010 x 223 mm
<b>WEIGHT</b>	<b>Net (lb / kg)</b>	88.85 lb / 40 Kg
	<b>Gross (lb / kg)</b>	102.63 lb / 47 Kg
<b>REGULATIONS</b>	<b>REGULATIONS</b>	FCC, cTUVus, CB, CE, BSMI, RCM, BIS, EAC
<b>Energy Star version</b>	<b>Energy Star version</b>	ES8.0
<b>EEI rating</b>	<b>EEI rating</b>	A+
<b>PACKAGE CONTENTS</b>	<b>PACKAGE CONTENTS</b>	1. Power cable (3 meters) x 4 2. Remote control 3. USB cable (3 meters) 4. AV cable 5. Touching pen x 2 6. Quick Start Guide 7. RS232 adapter 8. Clamp x 5 9. Plate 10. Screw x 8 11. HDMI cable
<b>Compatible Slot-in PC</b>	<b>Compatible Slot-in PC</b>	VPC14-WP series VPC10-WP series

VPC15-WP series  
VPC16-WP series  
VPC17-WP series

08212020

[www.viewsonic.com](http://www.viewsonic.com)

IFP6550-2